

20 Rhuddlan Road, Rhyl, LL18 2PR

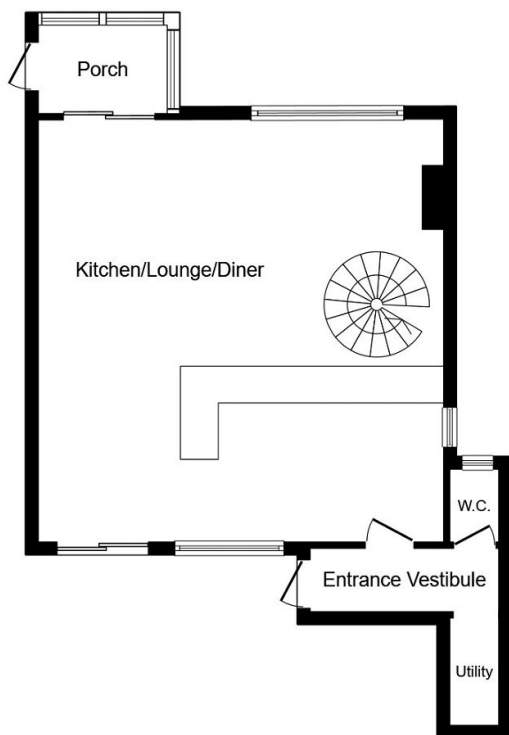
£295,000

🛏️ 4 🚿 1 🚗 1

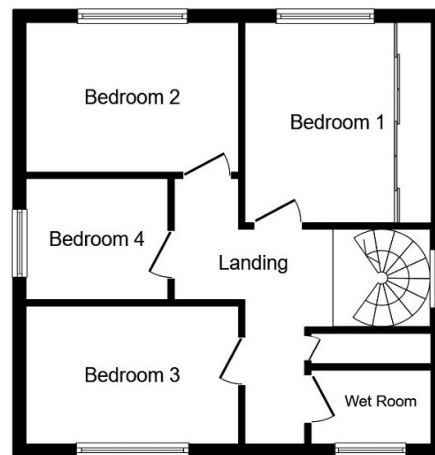


Introducing this unique detached property, offering immense potential for modernisation. Boasting a well-proportioned layout, it features a large reception room with open-plan design, offering an abundance of natural light with high ceilings, charming fireplace and spiral staircase. This area accommodates a sunken lounge, perfect for relaxation, the open-plan kitchen, complete with a dining space, provides the perfect setting for culinary delights and family gatherings. Within this delightful abode are four bedrooms of various sizes. This home is further enhanced with a large garden offering a tranquil retreat for outdoor activities and relaxation, additionally, garage and parking. This property is also disability accessible, providing ease of movement for residents. Schools, local amenities, and parks within close proximity. Do not miss this opportunity to acquire a property with such potential. Contact us to arrange a viewing to fulfill your dreams of a perfect family home.

- NO FORWARD CHAIN
- Spacious layout with high ceilings
- Open-plan kitchen with dining space
- Disability accessible for ease of movement
- EPC-D
- Detached property with great potential
- Sunken lounge with built in feature fire place
- Master bedroom with built-in wardrobes
- Garage and parking facilities available
- Instructed 23/10/2023



Ground Floor



First Floor

This plan is for illustration purposes only and may not be representative of the property. Plan not to scale. Powered by PropertyBox